

Weihnachtsvorlesung ***im zehnten Jahr*** ***2007***

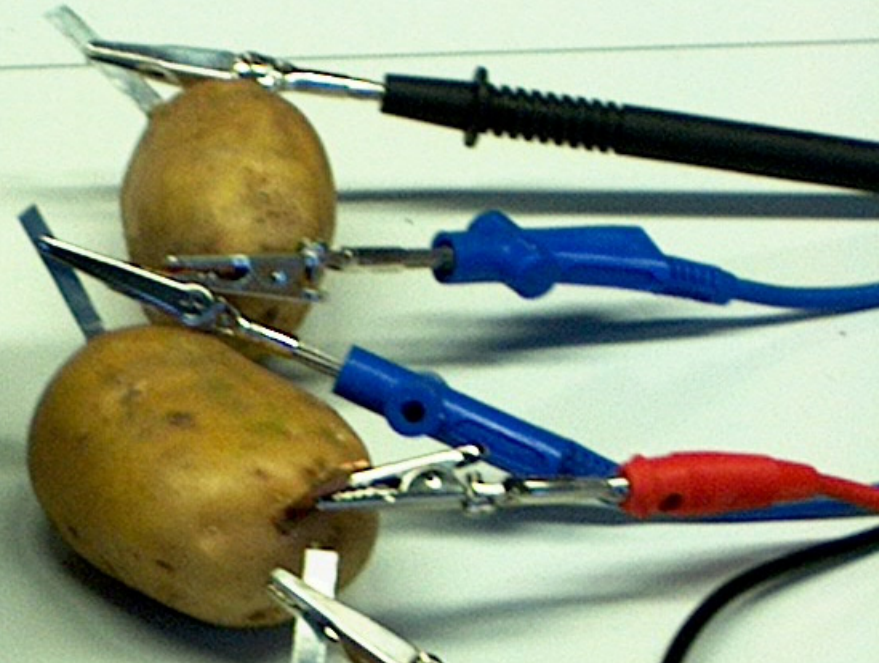
Quiz



Prof. Dr. Peter Kurzweil

Wie funktioniert die Gemüsebatterie?

10 €



a) Galilei-Element

b) **galvanisches Element**

c) Brennstoffzelle

d) Hydridbatterie

Prosit!

J. Stretz

20€



a) Ultrafiltration

b) Infraschallbad

d) Ultrazentrifuge

Die tiefkalte Flüssigkeit?

50 €

a) Trockeneis

b) tiefkalter Wasserstoff

c) flüssiger Stickstoff

d) entspannte Luft

Der grüne Brunnen beim Campusfest 2006?

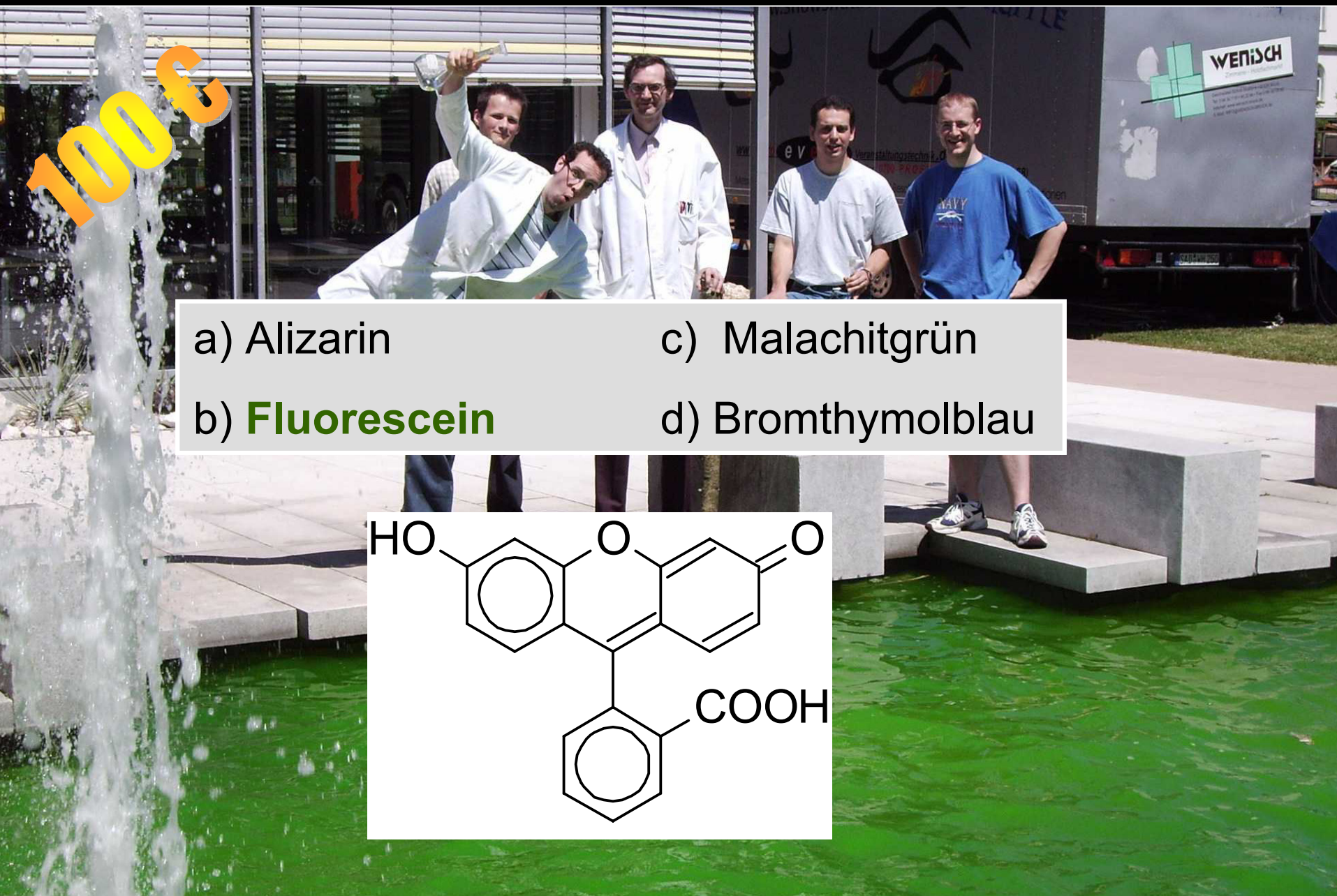
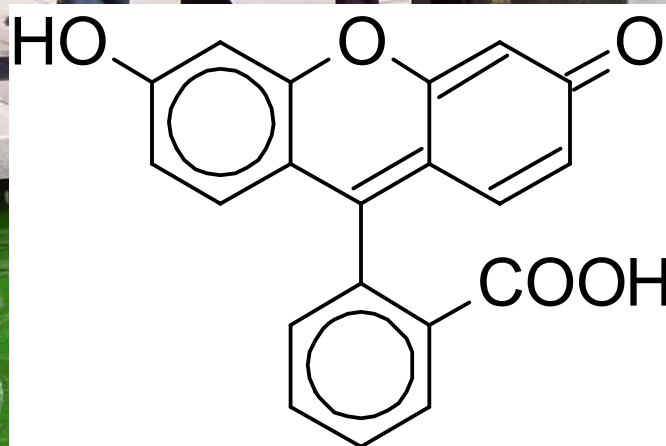
100€

a) Alizarin

b) **Fluorescein**

c) Malachitgrün

d) Bromthymolblau



Oszillierende Reaktion?

200€

A. Gietl

a) Belouis-Zaboute

c) Berliner Blau

b) Belafonte-Zorro

d) **Belousow-Zhabotinsky**

Gummibärcheninferno?

Oxidation von Zucker und Gelatine mit ...

J. Stretz

a) **Kaliumchlorat**

b) Kaliumchlorit

c) Kaliumchlorid

d) Kaliumperchlorat

500€



Was spuckt der Kollege?

1000 €



a) **absoluter Ethanol**

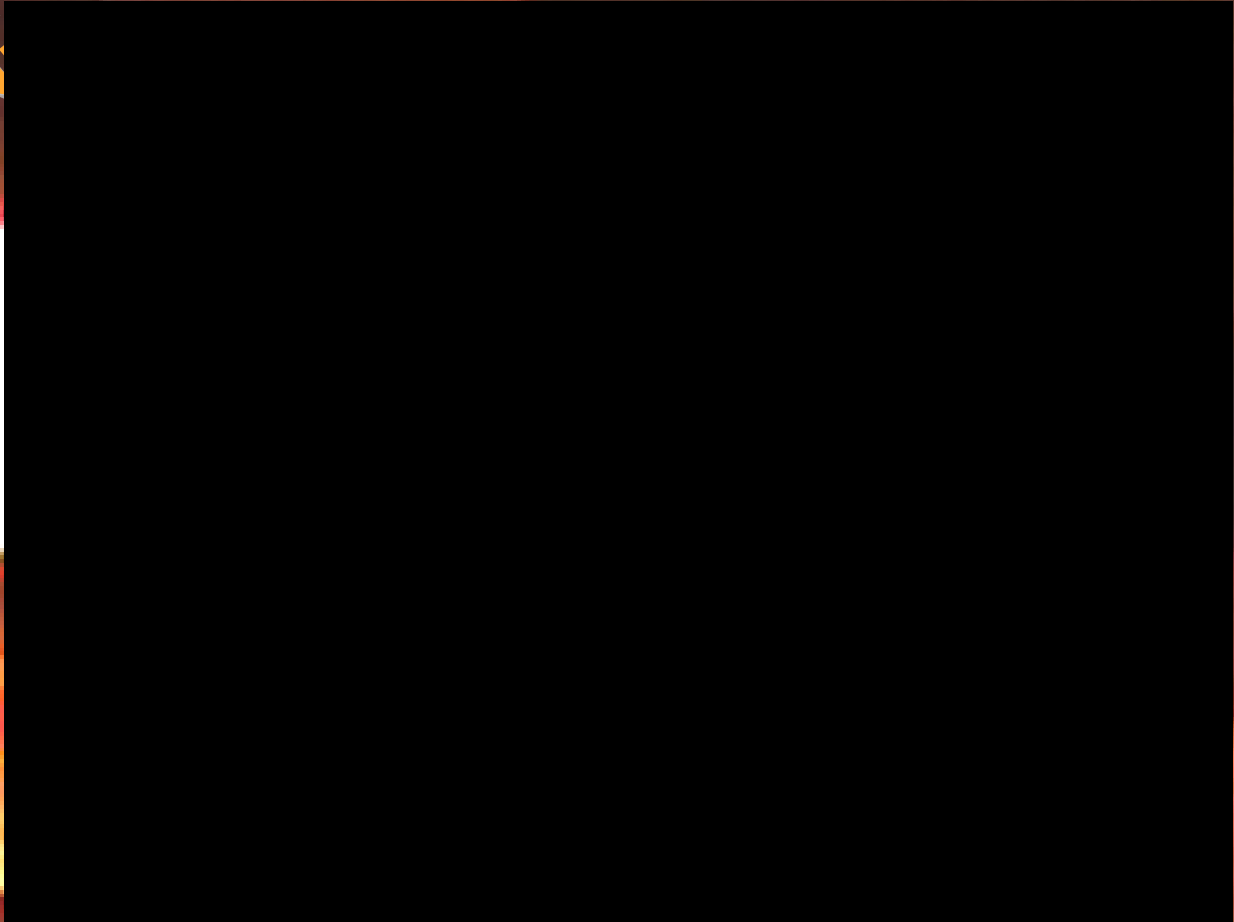
b) n-Heptan

c) Butan

d) Schwefel

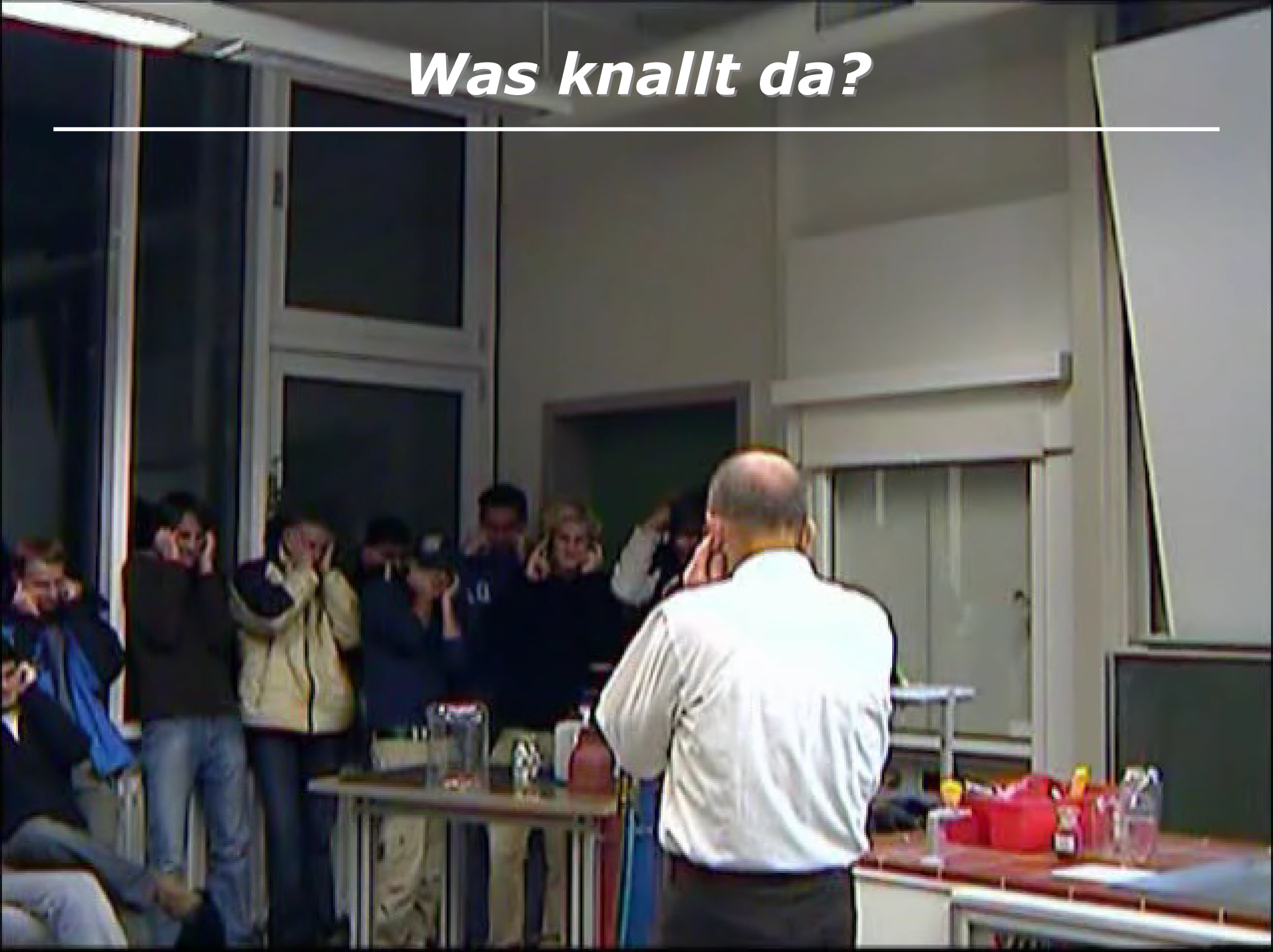
Was verpufft denn da?

5000 €



- a) Aluminiumpulver
- b) Benzin
- c) Ammoniumnitrat
- d) **Bärlappsporen**

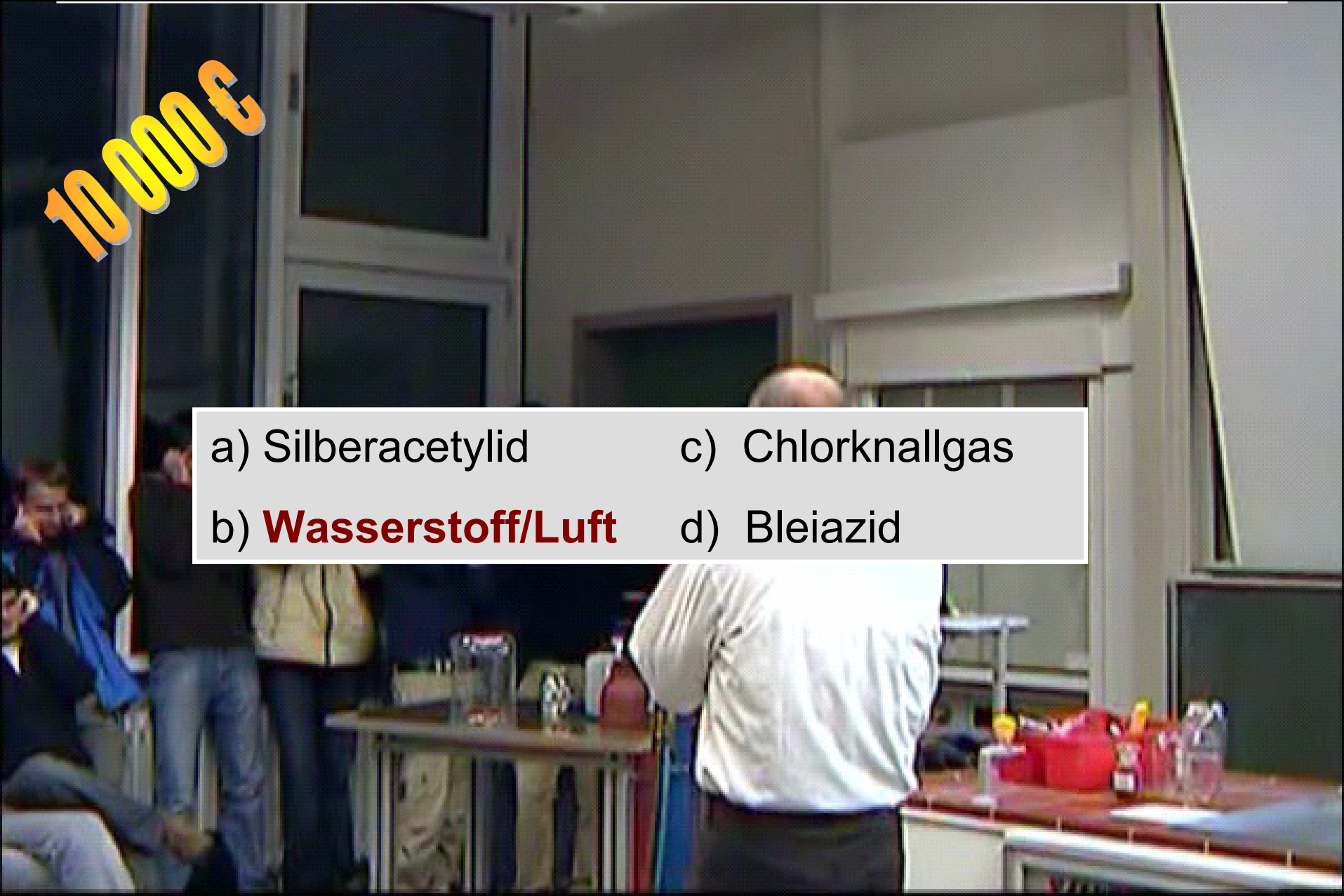
Was knallt da?



Was knallt da?

10 000 €

- a) Silberacetylid c) Chlorknallgas
b) **Wasserstoff/Luft** d) Bleiazid



Welch' ungestüme Macht?

30 000 €



a) Sprenggelatine

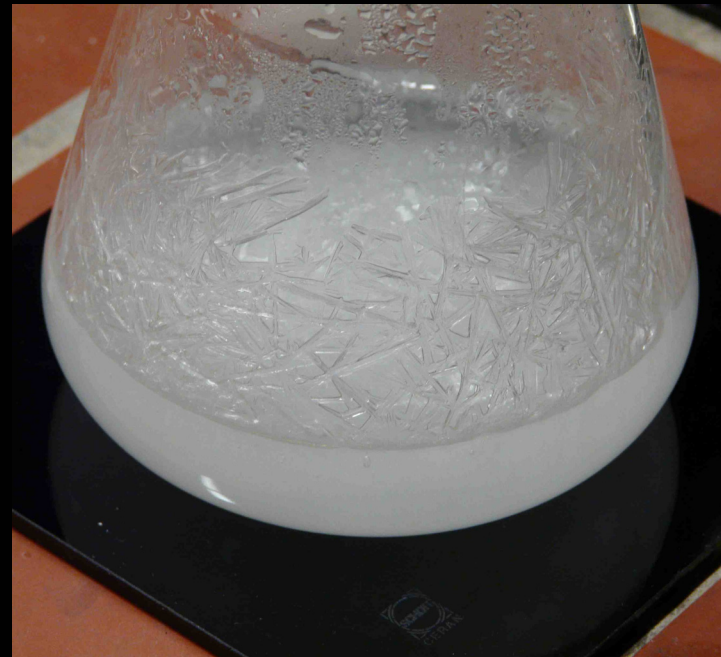
b) Pikrinsäure

c) **Nitroglycerin**

d) Nitrocellulose

Was kristallisiert da?

F. Lorenz



a) **Natriumacetat**

b) Natriumoxalat

c) Natriumhydrogencarbonat

d) Kaliumnitrat

50 000 €

Chemische Glühbirne?

100 000 €



a) weißer Phosphor

c) **3-Aminophthalhydrazid**

b) Zinnchlorid-Fluoreszenz

d) Tetraethylrhodamin

Blutiges Ende?

1 Mio. €



a) Phthalocyanin

b) $\text{K}_4[\text{Fe}(\text{CN})_6] + \text{FeCl}_3$

c) $\text{K}_2[\text{PtCl}_6] + \text{Hämin}$

d) **$\text{KSCN} + \text{FeCl}_3$**

A nighttime photograph of a modern building with a glass facade and a classical upper section. The building is illuminated from within, and the word "ENDE" is overlaid in large, white, italicized letters across the center. The building has a central entrance with a staircase and a glass door. The upper part of the building has a gabled roof and several windows. The lower part is a glass curtain wall. The scene is set at night, with a dark sky and some trees in the foreground.

ENDE

**A. Gietl, J. Stretz, F. Lorenz
Prof. Dr. Peter Kurzweil**